

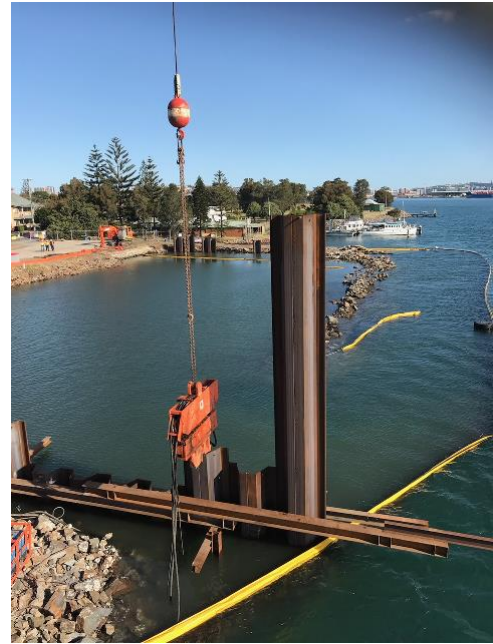
# PLANT DATA SHEET

For any enquires please contact  
[office@civilsydney.com.au](mailto:office@civilsydney.com.au)

23 Channel Road  
 Mayfield West  
 NSW 2304  
 Ph. (02) 4058 1800  
[www.civilsydney.com.au](http://www.civilsydney.com.au)

ABN 15 068 316 432

<b>Make:</b>	ICE	<b>Model:</b>	416L
<b>Year:</b>	1998	<b>Plant ID:</b>	PN038
<b>Plant Description:</b>		<b>Capabilities:</b>	
<p>The ICE 416 vibratory hammer / extractor is available with a full range of clamps to suit many applications. The hammer is coupled to a 325 power pack with open loop hydraulic system for maximum reliability. The power pack is equipment with a remote pendant which allows ease of operation while maintain full function control</p>		<ul style="list-style-type: none"> <li>• Sheet Piles</li> <li>• Tubular piles</li> <li>• Timber Piles</li> <li>• H Beams</li> <li>• Single &amp; Double Jaw</li> </ul>	



# PLANT DATA SHEET

For any enquires please contact  
[office@civilsydney.com.au](mailto:office@civilsydney.com.au)

23 Channel Road  
 Mayfield West  
 NSW 2304  
 Ph. (02) 4058 1800  
[www.civilsydney.com.au](http://www.civilsydney.com.au)

ABN 15 068 316 432

<b><u>Vibro Hammer</u></b>	
<b>Operational Weight:</b>	4,500kg (Single Jaw) Or 5,260kg (Double Jaw)
<b>Length:</b>	2,413mm
<b>Height:</b>	2,770mm (Single Jaw) Or 2480mm (Double Jaw)
<b>Width:</b>	486mm
<b>Eccentric Moment:</b>	2,304 kg.cm
<b>Centrifugal Force:</b>	592Kn
<b>Frequency:</b>	400-1,530vpm
<b>Amplitude:</b>	19mm
<b>Line Pull:</b> (Extraction)	356Kn
<b>Clamping Force:</b>	1,112Kn (Single Jaw) Or 2 x 770Kn (Double Jaw)
<b><u>Power Pack</u></b>	
<b>Weight:</b>	4,760kg
<b>Length:</b>	3,200mm
<b>Width:</b>	1,520mm
<b>Height:</b>	2,010mm
<b>Model:</b>	325 PU
<b>Engine:</b>	CAT 3306TA
<b><u>Additional Features</u></b>	
Enviro PANOLIN Oil	
E-STOPS	
Risk Assessment	
Service History	
Spill Kits	

